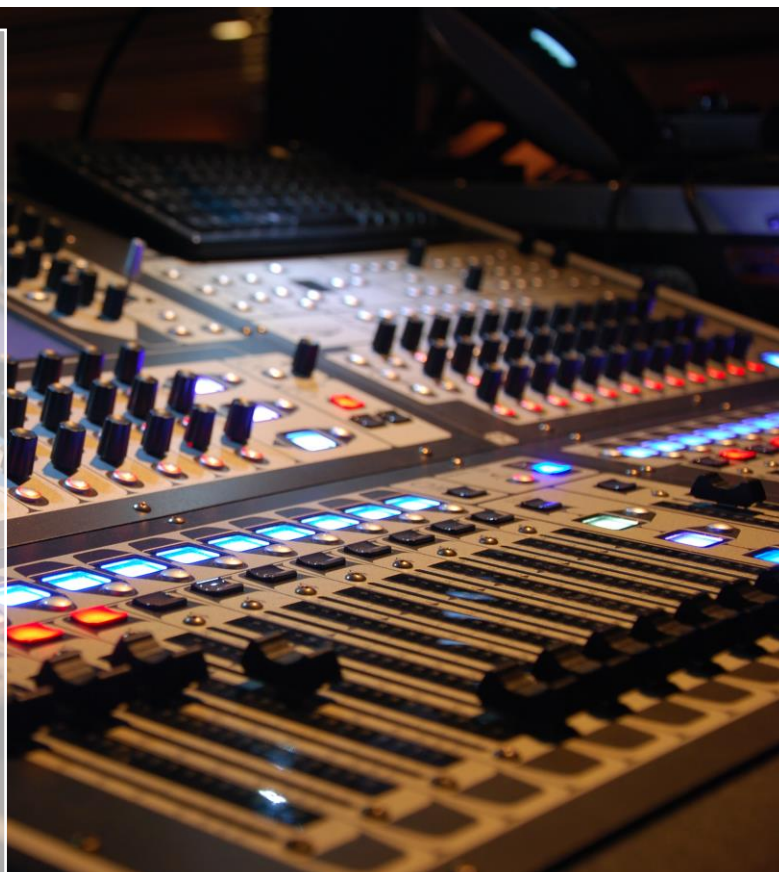




# KARRALYKA

Karralyka Theatre

2023



**Theatre Technical Coordinator  
Jake Sheppard**

E: [jake.sheppard@maroondah.vic.gov.au](mailto:jake.sheppard@maroondah.vic.gov.au)

**Theatre Technical Coordinator  
Sienna Gallagher**

E: [sienna.gallagher@maroondah.vic.gov.au](mailto:sienna.gallagher@maroondah.vic.gov.au)

**Theatre and Box Office Coordinator  
Chantal Easy**

E: [chantal.easy@maroondah.vic.gov.au](mailto:chantal.easy@maroondah.vic.gov.au)

**P: 9870 2888**



**KARRALYKA**

MINES ROAD  
RINGWOOD EAST  
VICTORIA  
AUSTRALIA 3135

Tel 03 9870 2888  
Fax 03 9870 2283  
[karralyka@maroondah.vic.gov.au](mailto:karralyka@maroondah.vic.gov.au)

[karralyka.com.au](http://karralyka.com.au)

<b>Stage &amp; Dimensions</b>	<b>4</b>
Brief Stage Description	4
Stage Dimensions	4
Staging Units	4
Loading Dock	4
Stage Door	4
Auditorium	4
Orchestra Pit	5
Orchestral Equipment	5
<b>Flying Facilities</b>	<b>5</b>
Drapery	6
High Access Equipment	6
<b>Lighting</b>	<b>6</b>
Lighting Positions	6
Stage Electrics Bars	6
FOH Bridge	6
FOH Perches (PS&OP)	6
Galleries & Sidelight Ladders (PS&OP)	6
Other LX Patch Locations	7
Dimming/Distros	7
Control	7
House Lights	7
Lighting Fixtures	8
Profiles	8
Fresnels	8
Washes	8
Followspots	8
LED Bars	8
Moving Lights	8
Other Fixtures	8
3-Phase Power	9
Cable Stock	9
<b>Audio</b>	<b>9</b>
Control Positions	9
Control	9

## KARRALYKA TECHNICAL SPECIFICATIONS

Amplifiers .....	9
Speakers.....	9
Audio Patching.....	9
Play-Back/Recording.....	9
Microphones / Input Gear .....	10
Mic Stands .....	10
<b>Audio Visual.....</b>	<b>11</b>
Data Projector .....	11
Digital Media Server .....	11
Projection Surface.....	11
A/V Play-Back Equipment .....	11
A/V Cabling .....	11
<b>BOH.....</b>	<b>11</b>
Communications .....	11
Stage Managers Desk .....	11
Talk-Back System.....	11
Paging / Show Relay .....	12
Dressing Rooms.....	12
Laundry/Wardrobe .....	12
Production Facilities .....	12
Green Room .....	12
<b>Attachment A - Theatre Stage Plan .....</b>	<b>13</b>
<b>Attachment B - Theatre Auditorium Plan.....</b>	<b>14</b>
<b>Attachment C - Theatre Lighting Plot .....</b>	<b>15</b>
<b>Attachment D - Theatre Hanging Plot .....</b>	<b>15</b>

## Stage & Dimensions

### Brief Stage Description

Unraked stage with a proscenium arch and flying facilities. Hardwood floor covered with Masonite sheets. Downstage edge of stage is curved to match seating. Only approved tapes are to be used on the stage. Screwing into the stage surface is subject to authorisation. Larger holes must be authorised prior to booking in consultation with technical coordinator. Stage crossover is via under-stage dressing room area.

**Stage Distributed Load Limit:** 500kg/m<sup>2</sup>

**Stage Point Load Limit:** 360kg

**Stage Rake:** No

### Stage Dimensions

**Proscenium Width:** 11.02m

**Proscenium Height:** 6.18m with a false proscenium sitting at 4.69m

**Setting Line:** 150mm Upstage of Proscenium, to allow for fire curtain track.

**Overhead Obstructions:** Fly Galleries located on PS & OP, clearance height 6.36m

**Stage Measurements:** (SL: Setting Line, CL: Centre Line)

SL to DS edge of apron: 3.36m

SL to US edge of orchestra pit: 1.46m

SL to rear wall: 8.65m

CL to OP wall (or obstruction): 11.47m

CL to PS wall (or obstruction): 11.57m

*See: Attachment A - Theatre Stage Plan*

### Staging Units

12 1x2m stage risers with black carpet surface\*. Can be set at either 200mm, 400mm, or 600mm.

\*price on application

### Loading Dock

Truck access is via a driveway located on Wilson Street. Vehicles must reverse in as there is not turning circle available. Long vehicles are advised to approach by travelling Wilson Street in the uphill direction and then making a reverse right-hand turn into the dock.

**Loading Dock Height:** 1.04m

**Door Dimensions:** 3400mm (H) x 2700mm (W)

### Stage Door

Stage Door is located near the entrance to the lower foyer off Mines Road. Access through this door is controlled via a pin-code system.

### Auditorium

2.95m rise over 12 rows with one aisle only on each side. Space to accommodate 3 wheelchairs (seats K40-43 are removed to achieve this)

**Maximum Seating Capacity:** 410

**Auditorium Floor (Row A) to Stage Level:** 960mm

*See Attachment B - Auditorium Seating Plan*

## Orchestra Pit

The orchestra pit is covered by 12 structural staging sections; the standard venue configuration has the pit covered. These sections can be removed in varying configurations as desired. 2 Karralyka technical staff are required for a 2-hour call to open/close the orchestra pit, this is at the cost of the hirer. This task can at times be completed before arrival by arrangement. If completed during venue booking times, enough space must be kept clear for staff to safely complete the job.

Access to the orchestra pit is via 2 doors PS & OP into the BOH area. Access can also be gained from the auditorium.

**Orchestra Pit Dimensions:** 9m x 2.9-1.9m (DS wall tapers either side of centre)

**Orchestra Pit Floor to Stage Level:** 2380mm

**Maximum Capacity:** Recommended 15 performers

## Orchestral Equipment

- Schimmel K189 Concert Grand Piano\*. Stored US in OP wing
- Yamaha Upright Piano in Green Room
- 15x Music Stands
- 15x Sconces
- 25x Chairs

\*price on application

## Flying Facilities

The theatre has a raked fly tower, varying in height from 10.7m (DS) to 12.4m (US) (floor to roof). There are 4 Flender, 13 SEW, and 1 Weg motorised pilewind winch bars. 13 of these are available for the hanging of scenery (12 SEW, 1 Weg), with 5 fixed as electrics bars (4 Flender, 1 SEW). Venue masking is hung from 3 Titan and 5 Anchor hand winches located on the PS gallery.

Typical travel time is 20cm per second at full speed. The system is only capable of flying 2 lines at any one time. Electronic deads can be recorded into the system for all scenery bars except motor 10. Electrics bars do not have electronic deads. The system is operated from PS Stage near the SM console.

Karralyka staff must operate the fly system, and you must have a dedicated fly person if you require more than 5 fly cues during your show.

\*Electrics Bars cannot be relocated, however scenery bars may be used as electrics bars. Masking bars may be relocated to other bars. Please speak to the Technical Coordinator if you may require this.

**Total Number of Lines:** 26 (18 motorised, 8 hand winch)

**Batten Type:** 50mm O/D Alloy Pipe

**Batten Length:** 14.5m

**Batten Extensions:** No

**Batten Pickups:** 4

**Batten Drift:** See Attachment C – Theatre Hanging Plot

**Fly Line Safe Working Load (SWL):**

Scenery Bars: 200kg @ Half Speed or 120kg @ Full Speed

Electrics Bars: 300kg HALF SPEED ONLY

Masking Bars: 200kg

## Drapery

Standard masking configuration includes: Soft Proscenium with legs, 4 sets of legs & borders, 2 sets of travellers, and a cyclorama. All black stage masking is manufactured to A/NZS 1530 Parts 2 & 3. They are made from inherently fire-retardant wool.

**House Curtain:** Royal Blue Velvet 2 x 6.6m x 6.6m @ 80% Fullness. Please note that the house curtain is motorised (French Action). Travel time is approximately 20 seconds. Control is via the SM console and Control Room.

**False Proscenium:** 1 Flat Border 14.6m x 3.05m & 2 50% Fullness Legs 1.9m x 7.7m

**Legs:** (All 50% Full) 8 @ 2.5m x 7m

**Borders:** (All 50% Full) 4 @ 14m x 2.5m

**Tabs:** (All 50% Full) 2 @ 7.9m x 4.85m (MS Tab), 2 @ 7.3m x 6.52m (US Tab)

**Cyclorama:** White, 14.2m x 9m

## High Access Equipment

**Elevated Work Platform:** JLG 20DVL fully motorised vertical lift

**Maximum Platform Height:** 5.94m

**EWP Operating Restrictions:** Operators must be licensed or deemed competent by the Supervising Technician.

**Ladders:**

1 x 1.8m Fiberglass double sided step ladder

1 x 2.4m Fiberglass double sided step ladder

## Lighting

### Lighting Positions

#### Stage Electrics Bars

5 on-stage electrics bars @ 14000mm long. 48mm O/D pipe

24 x Dim/GPO circuits per bar (evenly distributed).

2 x Cat6 Ethercon patches per bar. One each end, patchable in the dimmer room

All electrics bars are fixed in their position and may not be swung. Scenery bars can be used as electrics bars if required. Please speak to Technical Coordinator to arrange

### FOH Bridge

16.3m long, curved to the front of the stage. 48mm O/D pipe

SL to FOH Bridge: 8800mm @ 55.4 degrees

30 x Dim/GPO circuits (evenly distributed)

2 x Cat6 Ethercon patches. One either side of centre, patchable in the dimmer room

Access via FOH, full catwalk behind rigging position with normal standing room

### FOH Perches (PS&OP)

2500mm of vertically mounted 48mm O/D pipe

SL to FOH Perches: 12500mm @ 22 degrees

6 x Dim/GPO circuits in each perch (evenly distributed)

2 x Cat6 Ethercon patches at each position, patchable in the dimmer room

Access via FOH bridge catwalk, sloped ladder access into perch structure

### Galleries & Sidelight Ladders (PS&OP)

8 x Dim/GPO circuits on each gallery

2 x Cat6 Ethercon patches located on each gallery, patchable in the dimmer room

3 x box steel ladder frames per side

Ladders track US/DS as required



## Other LX Patch Locations

### PS & OP Floor Traps

2 x Dim/GPO and 2x dedicated GPO circuits per trap x 3 traps per side

\*Note that there are also 2 empty traps on each side. Only the most US, most DS, and centre trap contain circuitry

### USPS & USOP Patch Boxes

Located on the US wall either side of stage

6 x Dim/GPO circuits per side

2 x Cat6 Ethercon patches per side, patchable in the dimmer room

### Orchestra Pit

4 x Dim/GPO circuits on the US wall of the orchestra pit

4 x dedicated GPOs, 2 on each wall

## Dimming/Distros

Dimming for the theatre is centralised in the dimmer room, located next to the control room. All lighting patches run direct to a dimmer. No sub patch is required. All hard-wired dimming circuits can be bypassed to act as a standard GPO.

**Total Number of Dimmer Channels:** 216 with 206 wired in

**Dimmer Type:** State Automation Solution Cool 12ch dimmer with bypass switches

**Other Dimmers Available:** 2 x Jands GP12c, 1x Jands FP12

**Other Distros Available:** 1x Powerwise PD620M-3RC

## Control

**Console:** ETC Gio

**Parameters:** 4,096

**Signal Output:** 2x DMX512, 2x Ethernet (ArtNet, sACN), 1x MIDI

**Signal Distribution:** Pathway Pathport

- Cat6 data patches located around the venue
- Mix of fixed/portable nodes located as required
- Simultaneous process of up to 128 universes
- Nodes allow any universe to be selected at any location

**Remote:** Yes, BYO device

## House Lights

**Stand-Alone Control:** Available from the SMD. 100%, 50%, 25%, 0% presets. Fixed fade time

**DMX Control:** Available from the control room via a 5-pin DMX cable.

## Lighting Fixtures Profiles

Make	Model	Beam Angle	Details/Accessories	Wattage	Weight	Total
ETC	Source Four	15-30	B Size Gobo Holder, Iris	750w	10.25kg	4
ETC	Source Four	25-50	B Size Gobo Holder, Iris	750w	8.75kg	12
Selecon	Acclaim Zoomspot	24-44	M Size Gobo Holder, Iris	650w	5.1kg	14
Selecon	Acclaim Zoomspot	18-34	M Size Gobo Holder, Iris	650w	5.1kg	10

## Fresnels

Make	Model	Details/Accessories	Wattage	Weight	Total
Selecon	Compact	Barndoors	1200w	5.4kg	25
Strand	Harmony F	Barndoors	1000w	5.9kg	8
SilverStar	Frezno 250 Hex	RGBALC LED, Barndoors	250w	8.8kg	2

## Washes

Make	Model	Details/Accessories	Wattage	Weight	Total
Nitec	Blinder II	Multicell	156w	4.5kg	4
SilverStar	LED MyCyc	RGBAW LED Dual Cell Cyc Light	195w	10kg	10
Generic	UV LED Par	Intensity & Strobe Control			2
TourPro	Magic Par 1218	RGBAW LED Par	250w	5.6kg	20

## Followspots

Make	Model	Beam Angle	Details/Accessories	Wattage	Weight	Total
Selecon	Performer	5.5-9	6 colour magazine	1200w	27kg	2

## LED Bars

Make	Model	Details/Accessories	Wattage	Weight	Total
ProShop	EA-8085B	RGB LED Bar	100w		8 *

## Moving Lights

Make	Model	Details/Accessories	Wattage	Weight	Total
Clay Paky	Axcor 300 Spot	Moving Spot	340w	20.2kg	6 *

## Other Fixtures

Make	Model	Details/Accessories	Wattage	Weight	Total
AMCE	Strobe 1500	DMX Speed & Intensity Control	1500w	3.2kg	1
ShowPro	LED House Light	House Light	120w	6.3kg	15
Generic	Mirror Ball	20-inch with motor control			1
Look Solutions	Unique 2.1	Hazer	1500w		1 *
Robe	Fog 1500 FT	Smoke Machine	1500w		1 *
DJ Power	X-SW2000	Low Fogger	2000w		2 *

\*price on application



## 3-Phase Power

- 2 x 32A PS Gallery
- 1 x 32A OP Gallery
- 1 x 32A USPS
- 1 x 32A USOP
- 1 x PS Stage Corridor

## Cable Stock

- The theatre has a sufficient stock of 10A 240V Extension leads to suit most requirements
- 2 x 25m 6-Way 10A Weiland Looms
- 1 x 10m 32A 3-Phase Extension

## Audio

### Control Positions

**Control Room:** Located above the rear of the auditorium, standard location for house console

**Auditorium:** Centre of Row L requiring approximately 6 seats to be removed from sale. Full Madi patching available. Limited analogue audio patch.

**Other:** Other locations by arrangement only.

### Control

**Console:** DiGiCo SD8-24 Digital Console running Stealth Core 2

**Processing:** 120 input channels, 48 busses, 16x16 matrix, 24 control groups, 24 32-band graphic EQ's, 16 internal stereo FX units

**I/O Hardware:** Local - 8 mic in, 8 line out, 4 AES in/out, 2 MADI w/ redundancy

OP Stage MaDiRack - 48 mic in, 8 line out (fixed location)

Portable MaDiRack- 24 mic in, 8 line out

### Amplifiers

3x d&b D6 Dual Channel Amps (FOH LCR & Subs, Monitor)

### Speakers

5x d&b T10 Speakers (Centre Array)

3x d&b Ci80 Speakers (Side fill and control room monitor)

2x d&b E15-X Subs (Subs L+R)

7x QSC K12 Powered Speakers

### Audio Patching

- MaDi Patching is available in Control Room, PS Stage, OP Stage, USC Wall, and Orchestra Pit

- Analogue Patching is available from:

PS to OP: 24 sends / 4 returns

OP to Control Room: 24 sends / 4 returns

Row G to OP: 1 send

### Play-Back/Recording

Make	Model	Details/Accessories	Total
Apple	Mac Mini	Mounted in control room, running QLab	1
Apple	Macbook	Running QLab	2
Denon	DNC-620	Single CD Player – Racked in control room	2
Tascam	SS-CDR200	Multi-Format Flash Recorder. 2 Track Digital recording as MP3 or WAV. Racked in control room	1

## Microphones / Input Gear

Make	Model	Details/Accessories	Total
Shure	SM58	Vocal Mic	7
Shure	SM58S	Vocal Mic w/ Mute Switch	2
Shure	Beta 58A	Vocal Mic	4
Shure	SM57	Instrument Mic	10
Shure	Beta 57A	Instrument Mic	3
Shure	SM7B	Vocal Mic	2
Shure	Beta 52A	Kick Drum Mic	1 *
Shure	MX412	Lectern Mic	2
AKG	D5	Vocal Mic	2
AKG	D40	Instrument Mic	4 *
AKG	D112	Kick Drum Mic	1 *
AKG	C414 XLS	Large Diaphragm Condenser Mic	2 *
AKG	C 580	Lectern Mic	2
AKG/Crown	PCC160	Boundary Mic	3
Audix	D6	Kick Drum Mic	1 *
Audix	ADX 40	Choir Mic	4 *
Audix	ADX-218	Lectern Mic	1
Sennheiser	EM 500 G3	Wireless Receiver	6 *
Sennheiser	EM 300 G3	Wireless Receiver	2 *
Sennheiser	SKM 500 G3 e945	Wireless Vocal Mic	4 *
Sennheiser	SK 500 G3	Wireless Pack	7 *
Sennheiser	SK 300 G3	Wireless Pack	1 *
Sennheiser	MKE2	Lapel Mic	3 *
Sennheiser	ME 4	Lapel Mic	6 *
JAG	IMX6A	Headset Mic	7 *
Radial	Pro DI	Mono Passive DI	2
Radial	JDI Duplex MK4	Stereo Passive DI	1
Peak	PDI-401	Mono Active DI	4
AVE	VOX-DI2	Stereo Passive DI	1
Generic	Shout Mic	Mute Switch	2

\*price on application\*

## Mic Stands

Make	Model	Description	Amount
Konig & Meyer	21021	Overhead Boom with one-piece arm	2
Konig & Meyer	21060	Tall Boom with one-piece arm	8
Konig & Meyer	21060-S	Tall Boom with one-piece arm - Silver	1
Konig & Meyer	21070	Tall Boom with short one-piece arm	2
Konig & Meyer	21090	Tall Boom with telescopic arm	2
Konig & Meyer	25900	Medium Boom with telescopic arm	11
Konig & Meyer	25910	Short Boom with one-piece arm	1
Konig & Meyer	25950	Short Boom with telescopic arm	1
Konig & Meyer	20130	Folding Leg Straight Stand	1
Konig & Meyer	26000	Heavy Round Base Straight Stand	1
Konig & Meyer	26000-S	Heavy Round Base Straight Stand - Silver	1

## Audio Visual

### Data Projector

- Panasonic RX970 10,000 Lumen 1080P digital laser projector. Fitted with variable zoom lens. Controllable from lighting console via Artnet. Price on application.
- Projector is rigged in the auditorium beneath the control room.
- Various input options available in control room or other locations via cat5 transmitters.

### Digital Media Server

- Windows Server PC running Arkaos Media Master software.
- Control from lighting desk via Artnet
- Full HD Resolution, most file formats accepted.
- Audio output to sound console.

### Projection Surface

**Projection Screen:** 4.3m x 3.2m Front Projection Surface. Must be flown.

**Cyclorama Cloth:** Projection window approx. 11m x 5.5m

### A/V Play-Back Equipment

- 1x Mac Mini mounted in control room running QLab
- 2x Macbooks running QLab

### A/V Cabling

- The theatre has a good stock of VGA/DVI/HDMI/SDI cable to suit its equipment.
- The theatre has HDMI to Ethernet to transmit video over long distances

## BOH

### Communications

#### Stage Managers Desk

- Located DSPS (console may not be moved)
- LED Desk Lamps
- Comms Master Station
- Paging / Show Relay Control
- House LX Control
- House Curtain Control
- 2x 7-inch LCD Monitors
- 2x GPO (Max 5A/1200W)

### Talk-Back System

**Master Unit:** Clear-Com MS-702 Dual Channel Master Station

**Wireless Comms:** Clear-Com Tempest2400 Dual Channel Master Station

**Total Wired Belt Packs:** 7x Clear-Com RS-601 Single Channel Belt Packs

**Total Wireless Belt Packs:** 5x Clear-Com Tempest2400 BeltStation Dual Channel Belt Packs

**Total Headsets:** 10

**Talk-Back Patching Locations:**

Control Room (4)

Stage Managers Desk

Fly Cabinet

Orchestra Pit

USPS

DSOP

USOP

Production Desk (Row G)  
Rear Stalls (Row L)  
Tech Office  
Workshop

## Paging / Show Relay

- Paging to BOH areas from SMD
- Show relay audio to each location with local volume control (paging will override this feed)
- Show relay video to BOH locations (currently only in Green Room)

## Dressing Rooms

Dressing Room	Capacity	Toilets	Shower	Details
Dressing Room 1	20-25	NO	YES	Toilet at end of corridor. LED Mirror Lights. Hand Basin
Dressing Room 2	20-25	NO	YES	Toilet opposite. LED Mirror Lights. Hand Basin
Dressing Room 3	20-25	NO	NO	LED Mirror Lights.
Dressing Room 4 (External)	40-50	NO	NO	Accessed externally (joinable with DR 5)
Dressing Room 5 (External)	40-50	NO	NO	Accessed externally (joinable with DR 4)
Green Room	20-25	NO	NO	Green Room can be used as a dressing room. Curtains can cordon off rear half of the room.

## Laundry/Wardrobe

**Washing Machine:** Yes, 1  
**Clothes Dryer:** Yes, 1  
**Drying Room:** No  
**Iron/Boards:** Yes, 3  
**Clothes Racks:** Yes, 6 Portable

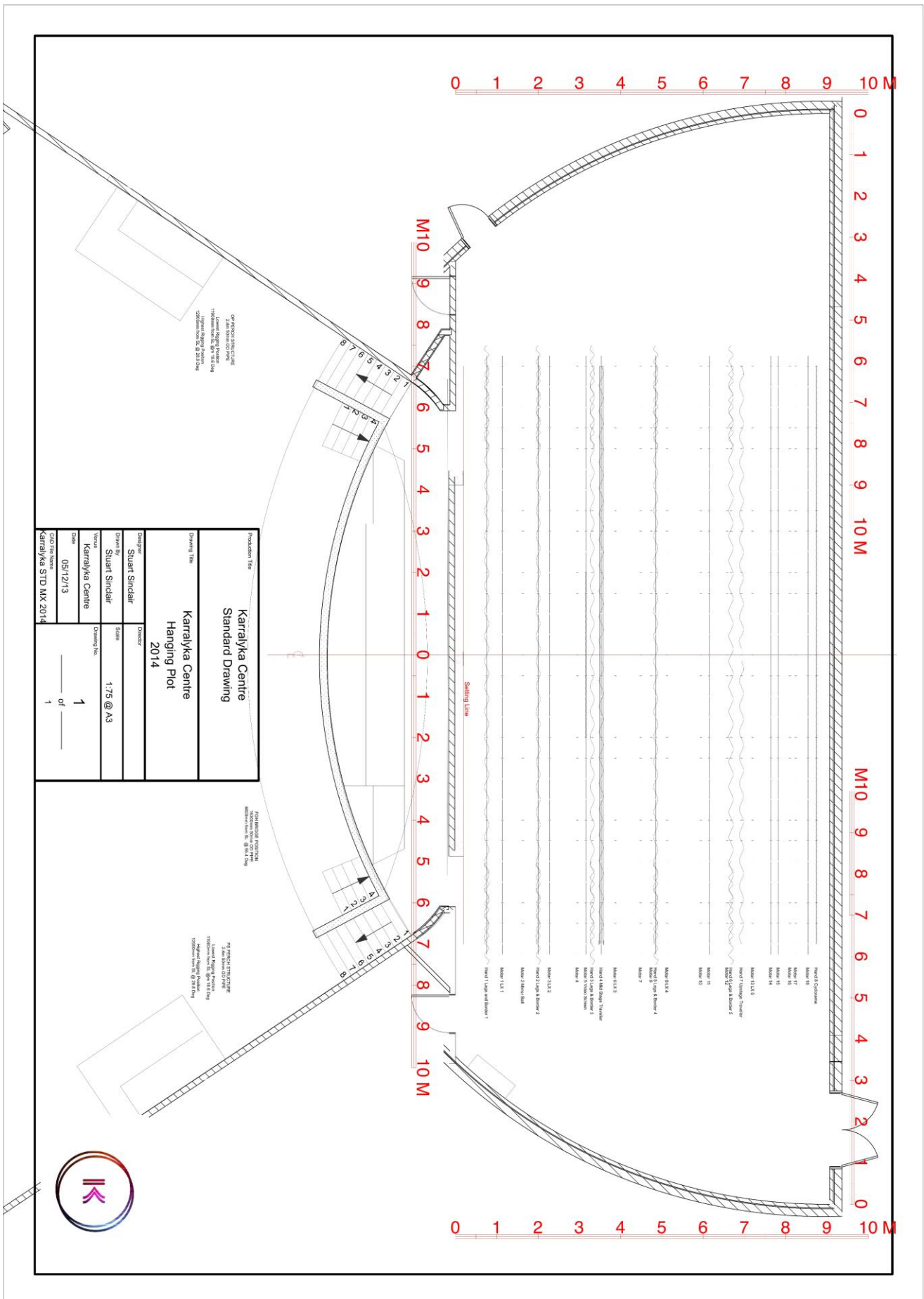
## Production Facilities

**Production Desk:** Row G. Facilities include lighting data, comms, cat5 data and audio ties  
**Production Office:** No  
**Internet Access:** Yes, Wi-Fi

## Green Room

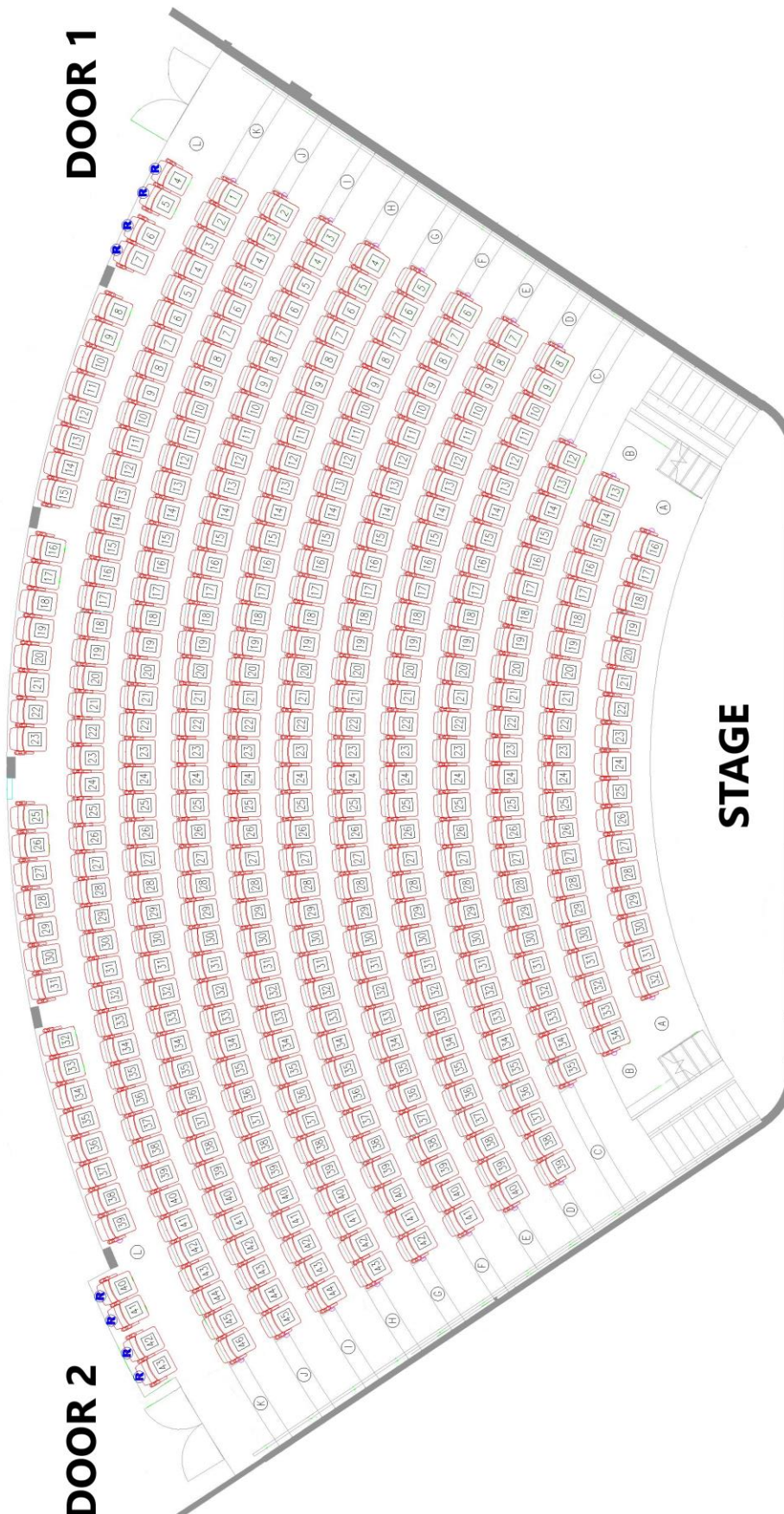
**Tea/Coffee Facilities:** Yes, By Arrangement  
**Fridge/Freezer:** Yes  
**Microwave:** Yes  
**Kettle:** Yes

# Attachment A - Theatre Stage Plan

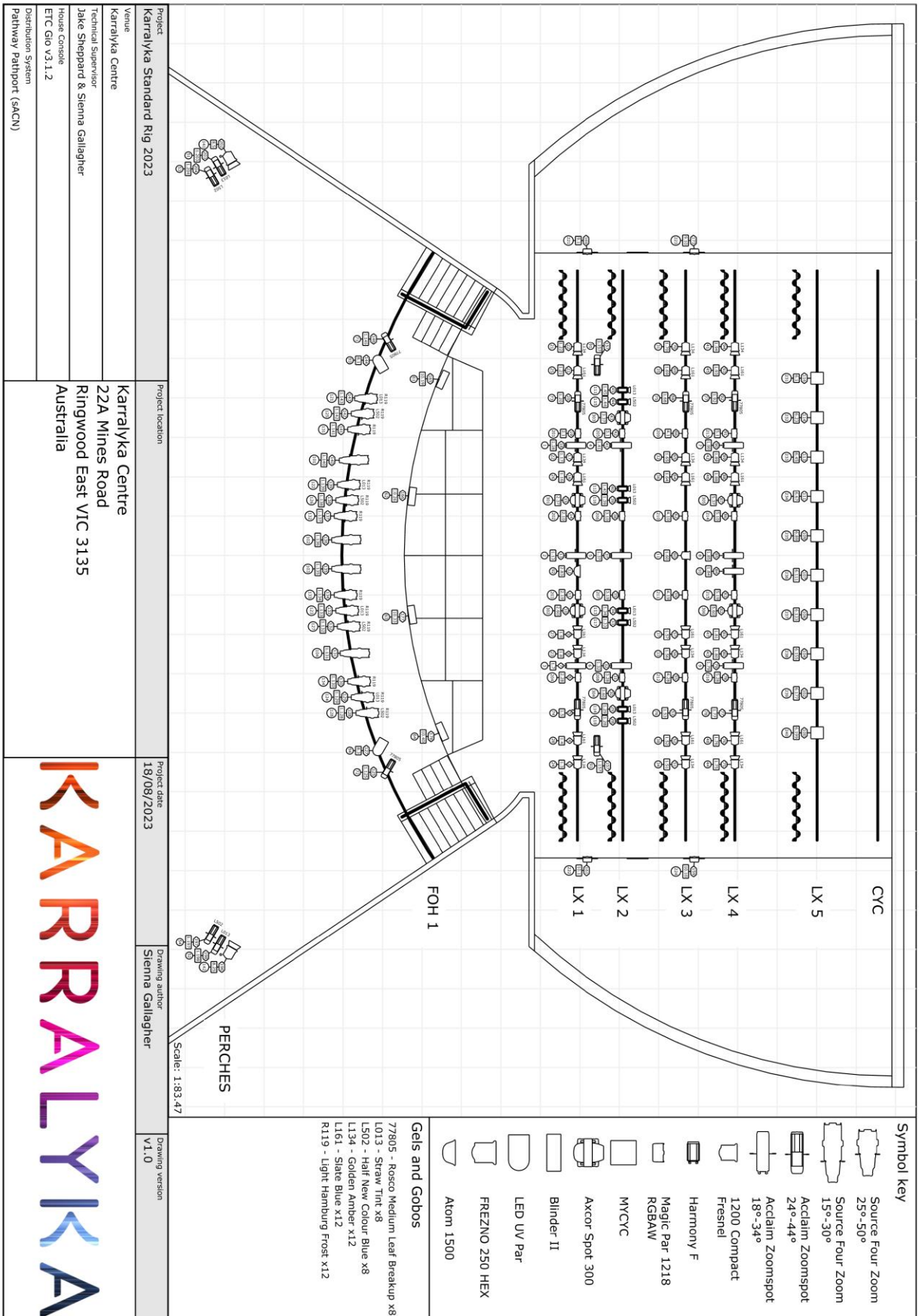




Attachment B - Theatre Auditorium Plan



## Attachment C - Theatre Lighting Plot





## Attachment D - Theatre Hanging Plot

Line Number	Distance from SL (mm)	Venue Standard Allocation	Stage to Grid	Stage to Bar (Hidden)	Bar (Hidden) to Grid
Hand 1	565	Legs & False Proscenium			
Motor 1	940	<b>Lighting Bar 1 (LX1)</b>			
Motor 2	1438		9.295m	5.480m	3.815m
Hand 2	1810	Legs & Border 2			
Motor 3	2090	<b>Lighting Bar 2 (LX2)</b>			
Motor 4	2760		9.617m	5.380m	4.237m
Motor 5	2965		9.518m	5.540m	3.978m
Hand 3	3120	Legs & Border 3			
Hand 4	3340	Centre Tab			
Motor 6	3680	<b>Lighting Bar 3 (LX3)</b>			
Motor 7	4290		9.976m	5.290m	4.686m
Motor 8	4550		9.956m	5.442m	4.508m
Hand 5	4660	Legs & Border 4			
Motor 9	4930	<b>Lighting Bar 4 (LX4)</b>			
<b>Motor 10</b>	<b>5750</b>	<b>LIMITED TO 100KG</b>	<b>10.287m</b>	<b>5.496m</b>	<b>4.791m</b>
Motor 11	5950		10.412m	5.720m	4.692m
Motor 12	6390		10.470m	5.228m	5.514
Hand 6	6485	Legs & Border 5			
Hand 7	6735	Upstage Tab			
Motor 13	7010	<b>Lighting Bar 5 (LX5)</b>			
Motor 14	7450		10.756m	5.312m	5.444m
Motor 15	7620		10.876m	5.416m	5.460m
Motor 16	7910		10.826m	5.493m	5.333m
Motor 17	8050		10.780m	5.613m	5.167m
Motor 18	8345		10.850m	5.678m	5.172m
Hand 8	8550	Cyclorama			